



Espacio Bertelsmann

Dialogue for a better future





Contents

1. Espacio Bertelsmann
2. Location
3. Rooms and spaces
 - 3.1. Entrance and reception desk
 - 3.2. Multi-use area
 - 3.3. Private room
 - 3.4. Conference hall
4. Find inspiration
5. Technical provisions
6. Furnishing
7. Floor plans

1 Espacio Bertelsmann

More than a space for events

The Bertelsmann Space, or Espacio Bertelsmann, was built by the prestigious architect Enric Miralles in 1992 as headquarters of the cultural centre of the Círculo de Lectores book club in Spain. Today, the site is operated by Fundación Bertelsmann and has become firmly established as a space for debate and exchanges of ideas.

Located in the centre of Madrid, Espacio Bertelsmann, the only work by the architect Miralles in the Spanish capital, was awarded the City of Madrid Prize due to its unique personality in 1993. The use of wood as the main material gives the site a sophisticated air and fuses perfectly with the innovative large screen stage and modern audiovisual equipment. This and its great versatility make Espacio Bertelsmann the perfect venue for events of all kinds.



Take a *virtual tour* and discover everything Espacio Bertelsmann has to offer!

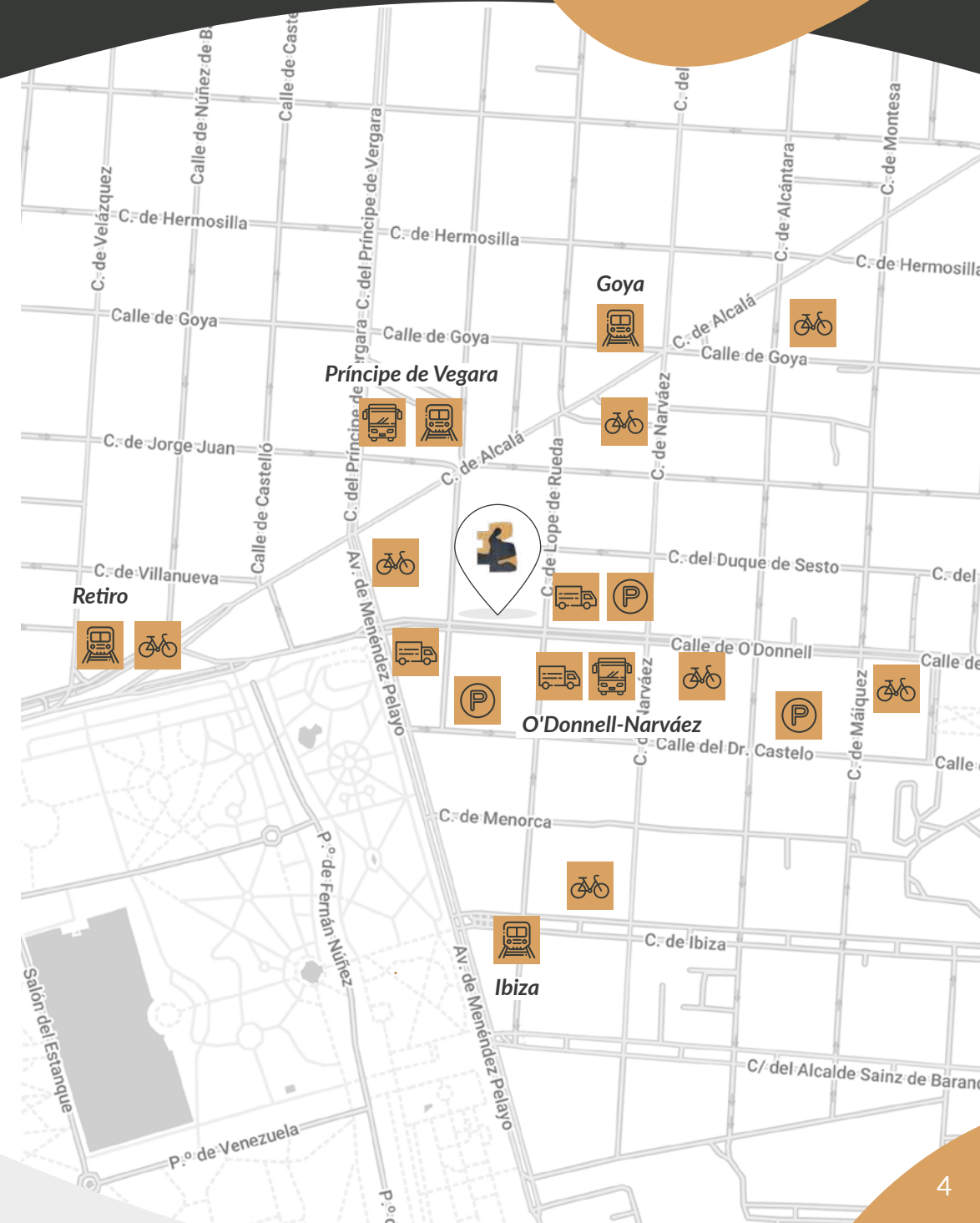


2 Location

In the heart of Madrid

Espacio Bertelsmann is located at 10, Calle de O'Donnell, in the heart of the city of Madrid, a stone's throw from El Retiro park and just five minutes from the iconic Alcalá Gate.

 Metro stations Príncipe de Vergara Ibiza Goya Retiro	 Bus stops Príncipe de Vergara 15 - 146 - 152 O'Donnell-Narváez 2 - 28 - N6
 Airport Less than 20 minutes' drive from <u>Adolfo Suárez Madrid-Barajas Airport</u>	 BiciMAD 61 - Narváez 98 - Plaza de Felipe II 97 - Alcalá 181 - Retiro-Ibiza
 Train station Ten minutes by car from <u>Puerta de Atocha</u> train station	 Car parks 10, Doctor Castelo 43, Doctor Castelo 33, O'Donnell
 Loading and unloading 6, O'Donnell 18, O' Donnell 22, Lope de Rueda	



3 Rooms and spaces

Everything you need

↓ see floor plans of
[Espacio Bertelsmann](#)

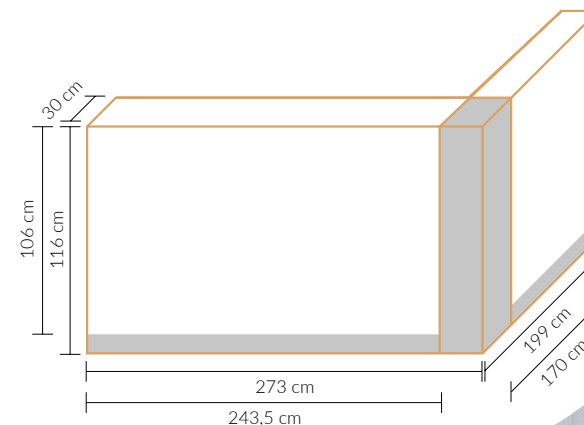
3.1. ENTRANCE AND RECEPTION DESK

ACCESSIBILITY: Occupying a single floor, Espacio Bertelsmann is a fully accessible venue. There are access ramps both at the entrance and onto the stage in the conference hall. The bathrooms are also adapted for people with reduced mobility.



Facilities in this area:

- Access ramp
- Two 65-inch screens, perfect for image and video projection
- High-speed Wi-Fi connection
- Wardrobes for around one hundred coats, with hangers and numbered tickets
- Reception desk, suitable for delivering badges and audio equipment
- Wall display



3 Rooms and spaces

Everything you need

↓ see floor plans of [Espacio Bertelsmann](#)

3.2. MULTI-USE AREA

This is, without doubt, the most versatile space in Espacio Bertelsmann. Located between the conference hall and the reception desk, the multi-use area is made particularly attractive by its striking central columns and the large mirrors covering the right-hand wall.




Its versatility makes this area ideal for all kinds of events: small meetings, catering, networking, photocalls and much more. The space provides direct access to both the private room and the conference hall.



Facilities in this area:

- 80-inch smart TV for photo and video projection
- 6 13-inch monitors fitted onto the columns
- Office kitchen for catering
- Accessible toilets

AREA: 87 m²

-  Cocktail events: 120 people
-  Banquets: 20 people
-  "Imperial" table plan: 12 people



3 Rooms and spaces

Everything you need

↓ see floor plans of [Espacio Bertelsmann](#)

3.3. PRIVATE ROOM

The private room is ideal as a green room for personalities and speakers and for small meetings. This space has also been used on several occasions for book and record signings.

The room can meet a range of needs according to the type of event. Its modular wall enables the space to be opened up completely to become an extension of the multi-use area for catering.

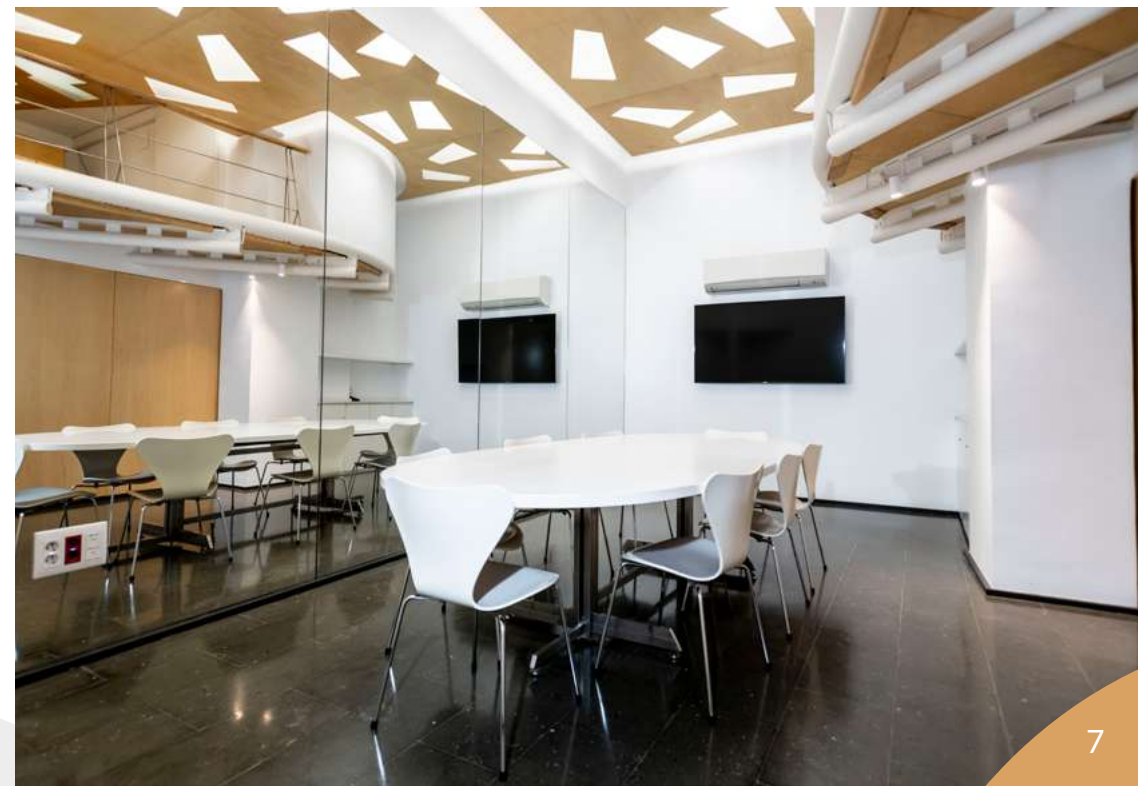


Facilities in this area:

- 65-inch screen
- Meeting table for 10 people

AREA: 27 m²

- 🍸 Cocktail events: 20 people
- 👑 "Imperial" table plan: 10 people



3 Rooms and spaces

Everything you need

↓ [see floor plans of Espacio Bertelsmann](#)

3.4. CONFERENCE HALL

The conference hall is the very heart and soul of Espacio Bertelsmann. Over the years, many quality events have taken place in this charming and sophisticated space.

The versatility of this space and the technical equipment installed here mean that a range of different formats can be adopted according to the needs of each user, including the organisation of hybrid or fully digitised events.



Equipment in the conference hall:

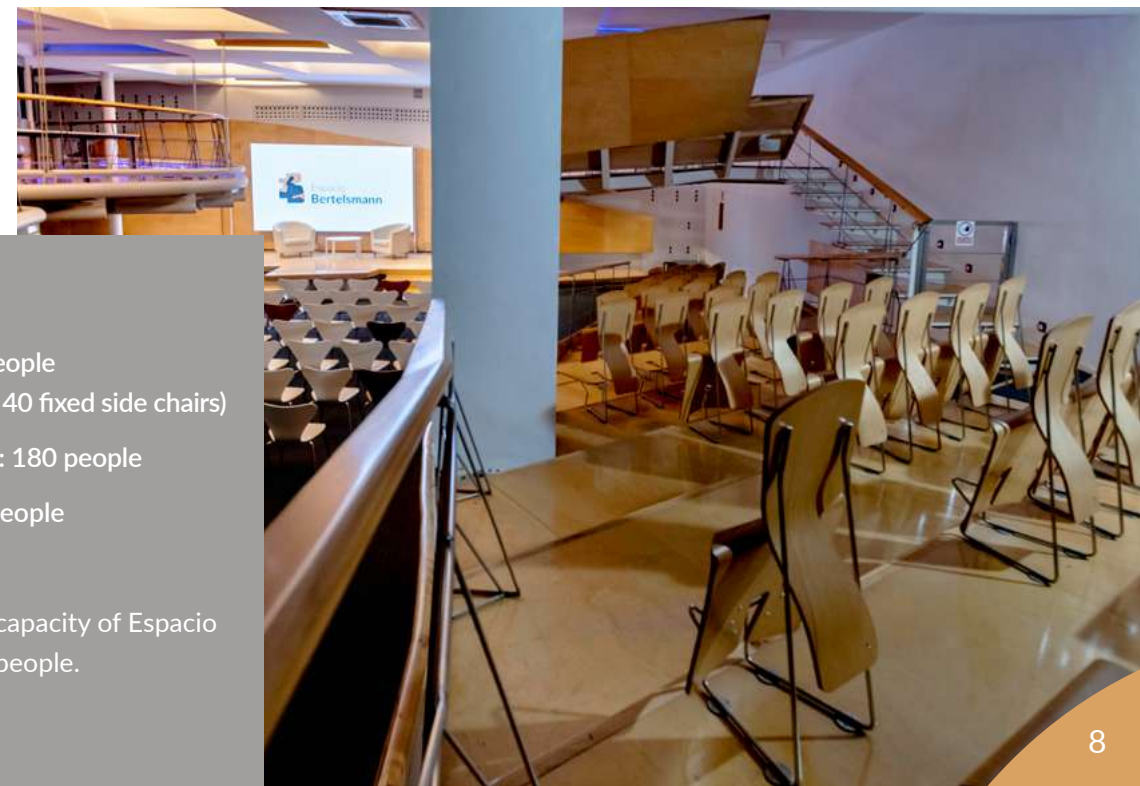
- 3.5x2 m LED screen
- Stage with access ramp
- Furniture for stage and audience
- Removable, customisable lectern
- 55-inch support screens
- Technical area for streaming and simultaneous translation
- Toilets

↓ [see full technical provisions](#)

AREA: 258 m²

- 🎭 Theatre: 200 people (160 chairs and 40 fixed side chairs)
- 🍸 Cocktail events: 180 people
- 🍽️ Banquets: 80 people

The maximum legal capacity of Espacio Bertelsmann is 200 people.



4 Find inspiration

Everything you can imagine

Thanks to its structure, Espacio Bertelsmann can be adapted to host a wide range of different events, including:

- Debates
- Conferences
- Training sessions
- Workshops
- Product launches
- Press conferences
- Teambuilding events
- Award ceremonies
- Graduations
- Recording sessions
- Concerts
- Screenings
- Lunches
- Cocktail events



5 Technical provisions

Cutting-edge technology

Espacio Bertelsmann provides all the tools necessary to stage quality events. For our clients' convenience, the equipment listed below is included in the rental price.

Audio:

- 6 Shure over ear microphones (exchangeable for 2 lavalier microphones)
- 2 Shure handheld microphones
- 2 lectern microphones
- Midas M32 console
- DAS Audio equipment, distributed by zones
- Press patch box, 4 outputs

Video:

- 3.5x2 m LED screen with 1.9 mm pixel pitch, video processor and Novastar J6 switcher
- 6 55- to 80-inch screens,

distributed throughout the venue

- 9 13-inch mini-screens in closed circuit pulgadas en circuito cerrado
- Slideshow presenter
- Roland video switcher

(Screen resolution: 1920x1080)

Others:

- Adjustable and customisable LED lighting system
- Technical area for audiovisual control, streaming installation and simultaneous translation (2 booths without equipment)
- Wi-Fi connection to Internet



6 Furnishing

Arrange the furniture available as you wish



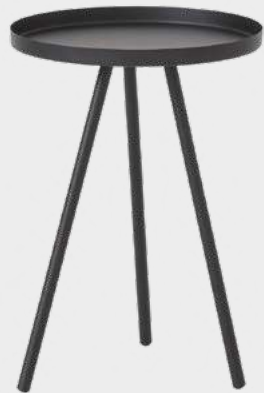
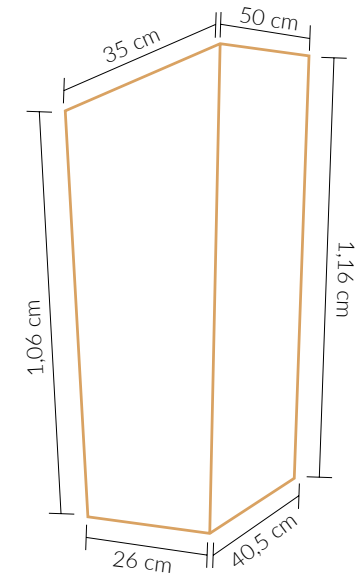
Up to 200 chairs



40 fixed side chairs



Lectern on stage



Support tables (6 black, 2 white)



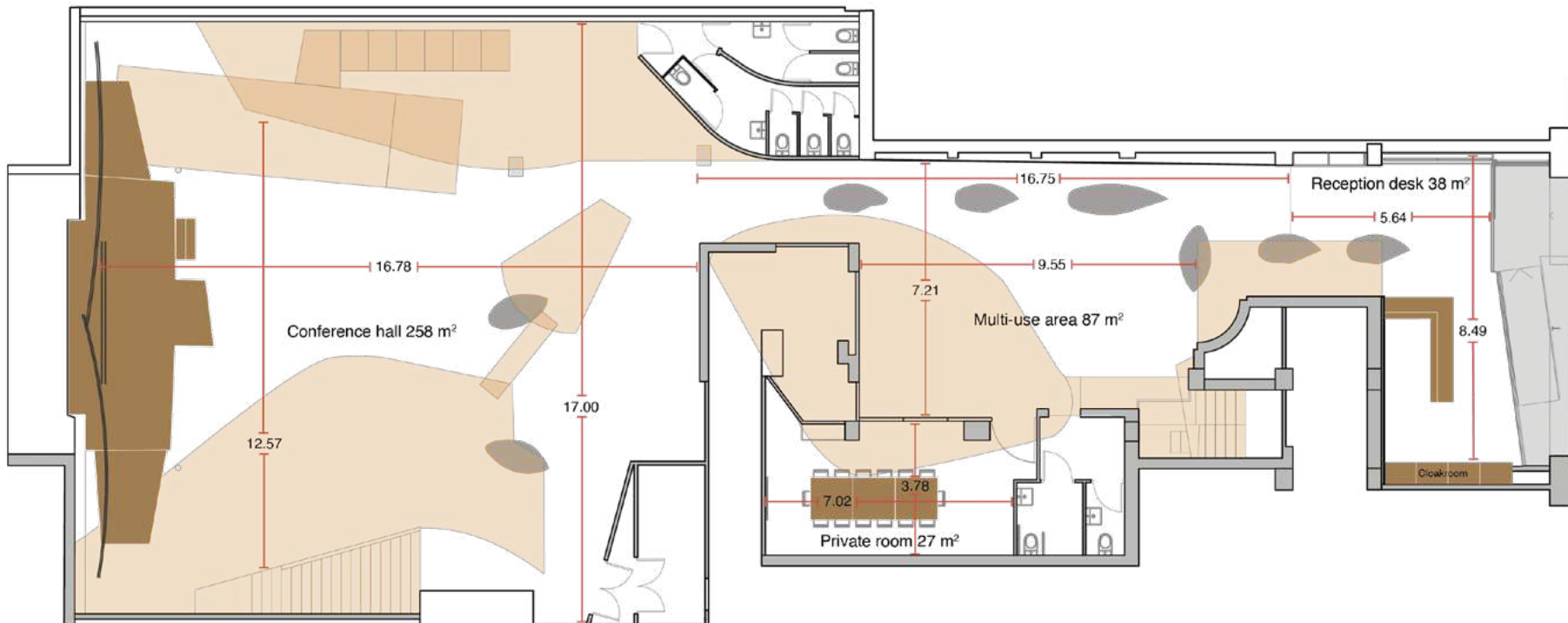
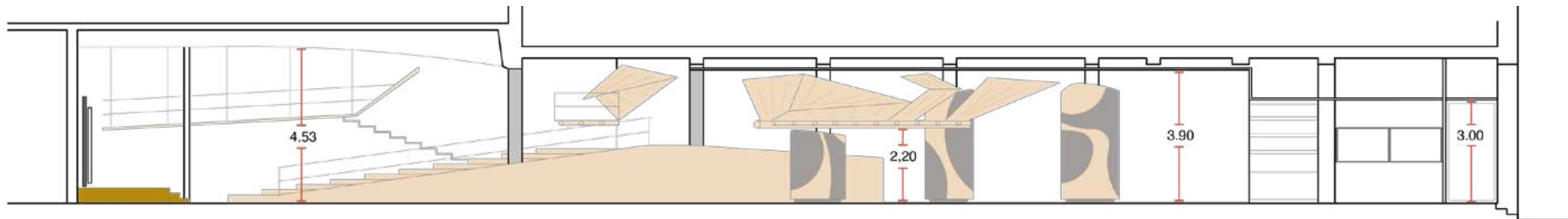
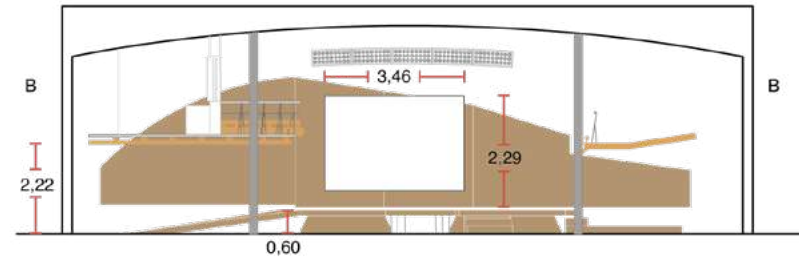
6 stools



6 armchairs

7 Floor plans

Discover Espacio Bertelsmann inch by inch





**Espacio
Bertelsmann**

Dialogue for a better future

Address: Calle de O'Donnell, 10,
28009 Madrid (Spain)
info@espaciobertelsmann.es
www.espaciobertelsmann.es

